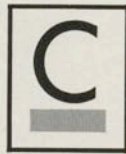


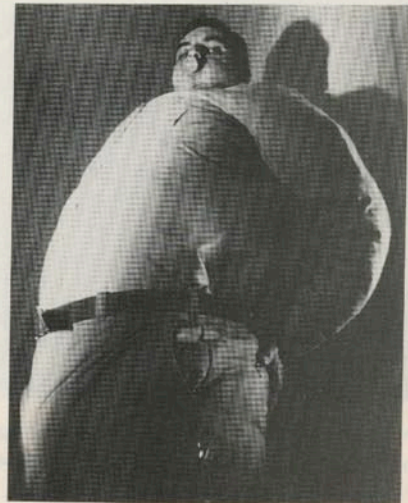


THE FACE

I N T R O



onfirming our suspicions that photographers are indeed a motley crew, and as keen to turn the camera on themselves as on anyone else, is the current exhibition at the National Portrait Gallery. The 200 images of *Staging The Self* (until Jan 11) run from 1840 to the present, and include the work of such ace shutter-bugs as Hippolyte Bayard, Man Ray and Annie Brigman exposing themselves in imaginary and often perverse forms. All part of what the exhibition calls "the quest for a valid artistic identity". We're keeping our fingers crossed Jimmy De Santa (right) found himself when snapping his 1985 study in gum and gut.



THE FACE

27

EDITED BY KIMBERLEY LESTON