

Tatler, April, 2013

# TATLER

ABOUT TOWN

## ART NOTES

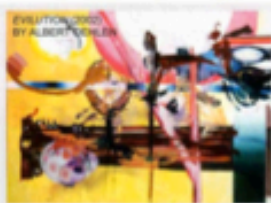
CUTTING-EDGE COLLECTOR ANITA ZABLUDOWICZ GOES MAD FOR PAINTER ALBERT OEHLER... BY DEA VANAGAN

### WORK

Chaotic collisions of colour contrast! Agitated effect! Interrupted images! Albert Oehler's 'post-non-representational' art comes to Chalk Farm.



DEATHORNOCH (2011) BY ALBERT OEHLER



EVOLUTION (2002) BY ALBERT OEHLER

**THE NEED-TO-KNOW SHOW**  
PAINTING FROM THE ZABLUDOWICZ COLLECTION:

Albert Oehler, Francesca DiMattio and Matthew Chambers at 176 Prince of Wales Road, NW5 (until 5 May)

Or how Oehler influences everyone from Chris O'Keefe (without the trademark dung) to Peter Dinklage.

### WHERE IT'S AT

For most parties, it's an old Methodist chapel revamped by the Zabludowicz into a testing lab for emerging art in London. A lucky few may get to visit the couple's home and see Jeff Koons's work in their kids' room - redefining 'living with art'.



The Zabludowicz Collector's London gallery in Chalk Farm

### LIMITED EDITION

Pick up Oehler's massive-sized monograph, £900, below right - limited to 1,000 (handball) box copies - or get extra credits if you acquire one of just 100 Art Editions, £3,000, below left, complete with an original artwork, both at [tate.com](http://tate.com).

### PLAY

Foggy boating, old rearing and take a walk on Oehler's dreamlike 'Neue Wilde' side.

DETAIL FROM OBJECT (DINSE) (1987) BY ALBERT OEHLER



POLU & ANITA ZABLUDOWICZ



### IN HIS OWN WORDS



**ALBERT OEHLER**  
'I still believe in the unpredictable, in an artist who just has something and overwheals you with something that you didn't even ask for.'

### ZABLUDO-WHAT?

Established by Newcastle-born philanthropist Anita Zabludowicz and her Finnish-megal husband Polu in 1994, the hyper-cool collection has 2,000 works - by over 500 artists - from the past 40 years. (Polu also owns an ice hockey team. Even cooler.)



### INVITATION ONLY

Alongside the headline show, the Zabludowicz 'Invites' series features new work by unsung/overlooked UK-based artists for six weeks at a time. Check out Royal Academy graduate **Pia Kadu's** creation, left.

### ARTSPEAK DEFINED 'NEUE WILDE'

Aka 'the young wild ones' of the neo-expressionist art of Eighties Germany - think YBAs but in German. **Martin Kippenberger, Georg Baselitz** and Oehler.

ARIS OUTREMER BY GEORG BASELITZ



IN HER OWN WORDS  
**ANITA ZABLUDOWICZ**

'There's nothing as boring as plinking pieces of art just anywhere without a conversation.'

### GETTING THE GOODS

Lost in the contemporary world? Peer over the artists' editions at cheap, [zabludowiczcollection.com](http://zabludowiczcollection.com). 'Way to go!' RIGHT: DAVID BLANDY'S DUELS AND QUALITIES BATTLE OF THE SOUL. ACTION FIGURE - SHARPOOF LONG PEGURAM (2012), £35

